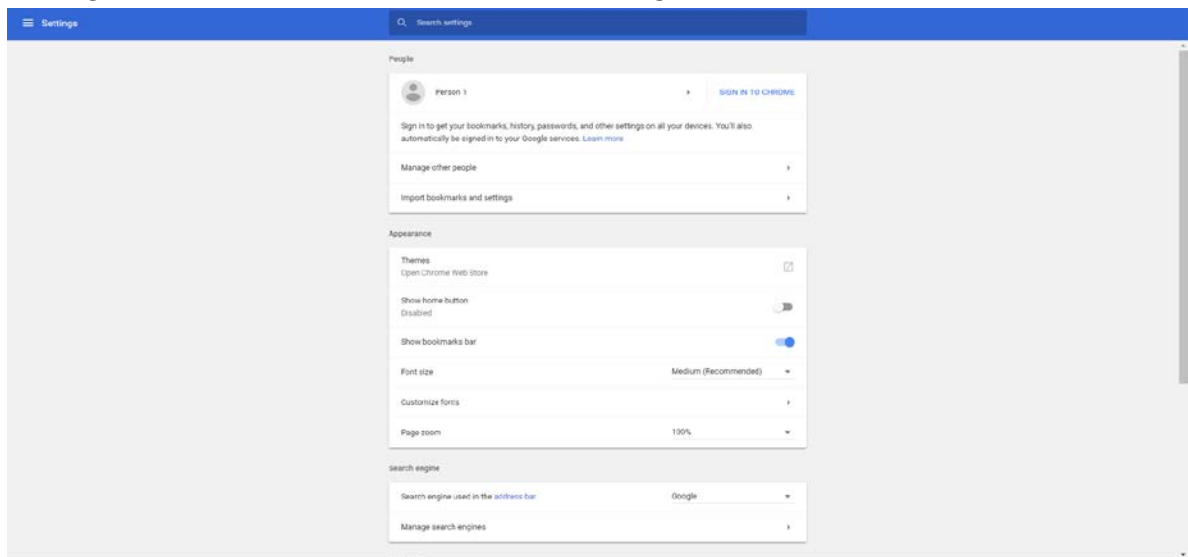


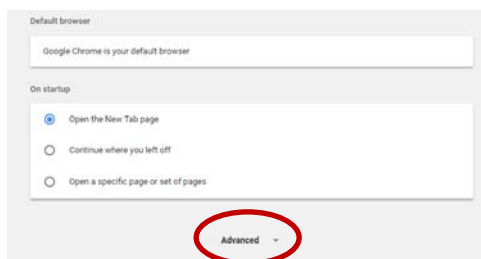
How to enable TLS Security features in Google Chrome

NOTE: Some versions of Google Chrome use the security settings enabled in Internet Explorer. If these steps (below) are unavailable within your Google Chrome account and you are having difficulty logging into your Online Banking, Cash Management or Credit Card Online Account Manager, review the advanced settings in Internet Explorer (as outlined above).

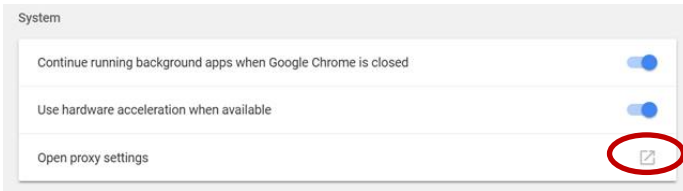
1. In Google Chrome, click “Alt” and “F” and select Settings.



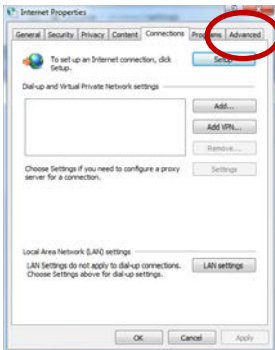
2. Scroll down and select Show advanced settings.



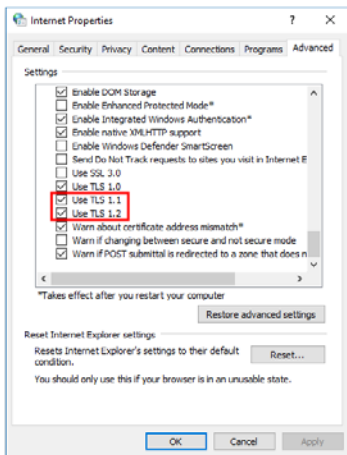
3. Scroll down to the Network section and click on Open proxy settings.



4. Select the Advanced tab.



5. Scroll down to Security category, manually check the option box for Use TLS 1.1 and Use TLS 1.2.



6. Click "Apply" and "OK".



Bankoftravelersrest.com

864.834.9031