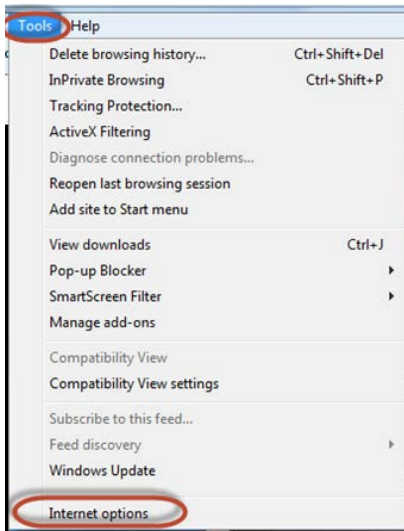
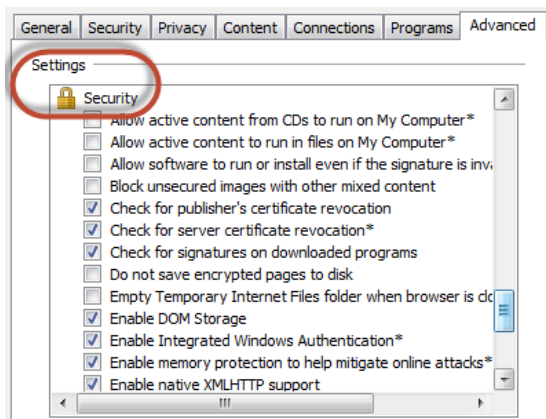


How to enable TLS Security features in Internet Explorer

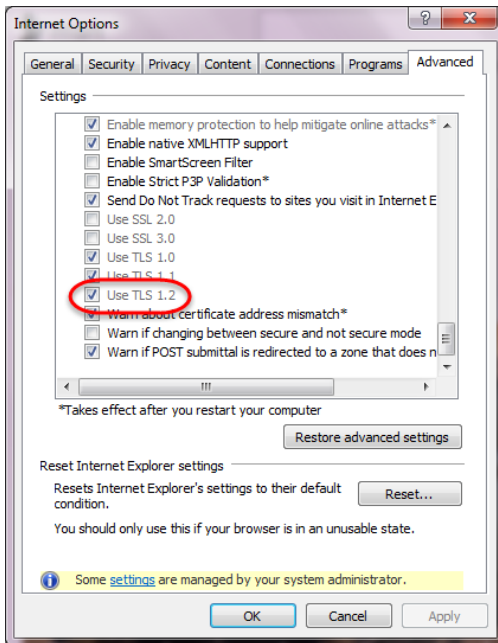
1. In Internet Explorer, click Tools>Internet Options.



2. Select the Advanced tab and scroll down to the Security section.



3. Scroll down through the options and check “Use TLS 1.2”



4. Once you have selected the “Use TLS 1.2” option, click “Apply” and “OK”.



Travelers Rest | Marietta | Berea
Greenville | Greer | Verdae

Bankoftravelersrest.com
864.834.9031